



CERTIFICATE OF ANALYSIS



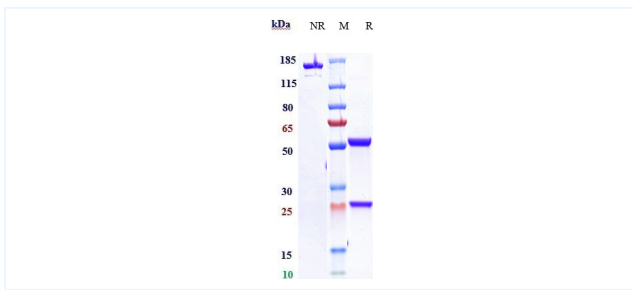
Product Details

Product name:	Anti-CLDN18.2 Reference Antibody (zolbetuximab)	Lot.No.:	P214129
Target:	CLDN18.2	Catalog:	CHA181
Target Accession:	P56856	Concentration :	1 mg/mL
Clonality:	Monoclonal	Isotype:	Human IgG1
Reactivity:	Human	Molecular Weight (kDa) :	150 kDa
Application:	FCM, In Vivo, ELISA, Function: ADCC	Endotoxin:	<1 EU/mg
Formulation:	Liquid: 100mM Pro-Ac, 20mM Arg pH 5.0 Lyophilization: 25mM histidine, 8% sucrose, 0.01% Tween80 pH6.2	Conjugation:	Unconjugated
Reconstitution:	For Powder, reconstitute with sterile, distilled water to a final concentration of 1 mg/ml. Gently shake to solubilize completely. Do not vortex.	Expression System:	CHO
Storage:	-80°C for 2 years under sterile conditions; -20°C for 1 year under sterile conditions; Avoid repeated freeze-thaw cycles.	Purification:	Protein A

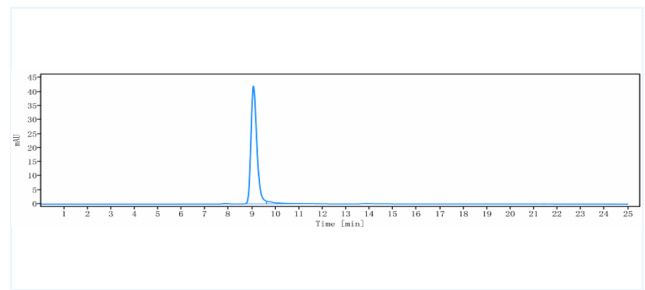
Data

Purity: SDS-PAGE

Purity: SEC-HPLC

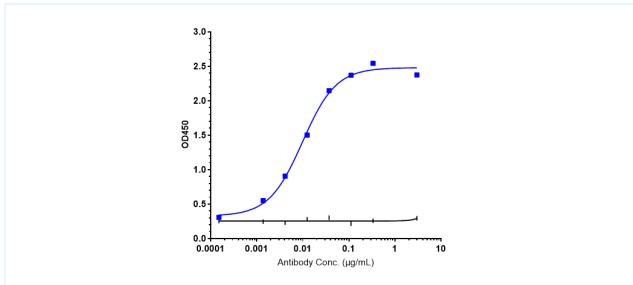


Anti- Human CLDN18.2 (Zolbetuximab) on SDS-PAGE under reducing (R) condition. The purity of the protein is greater than 95%.



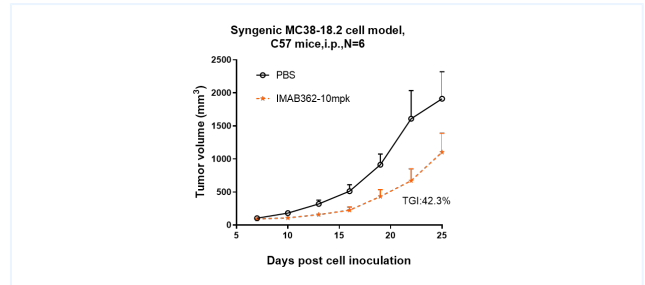
The purity of Anti- Human CLDN18.2 (Zolbetuximab) is 96.05%, determined by SEC-HPLC.

Bioactivity: ELISA



Immobilized human CLDN18.2 (VLP Tag, 2 µg/mL) can bind to Anti-Human CLDN18.2 (Zolbetuximab) with an EC50 of 0.07951 µg/mL.

Research in vivo



Anti- Human CLDN18.2 (Zolbetuximab) inhibited the tumor growth of CLDN18.2-MC38 (Mouse colorectal cancer cells) on C57BL/6N mice. The result showed significant anti-tumor effects, with an tumor inhibition rate (TGI) of 42.3% at 10 mpk at D25.

The products are for research use only. Not for use in diagnostic procedures.