



# CERTIFICATE OF ANALYSIS



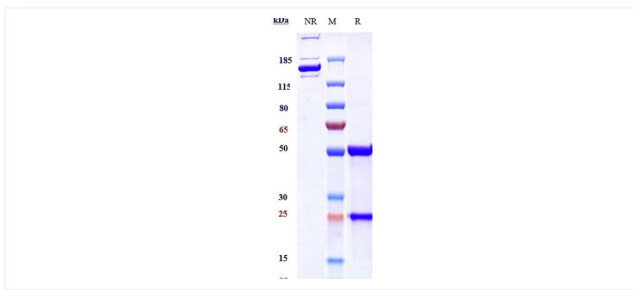
## Product Details

Product name:	Anti-IL-2Ra / CD25 Reference Antibody (basiliximab)	Lot.No.:	P223732
Target:	IL-2Ra / CD25	Catalog:	CHA151
Target Accession:	P01589	Concentration :	None
Clonality:	Monoclonal	Isotype:	IgG1
Reactivity:	Human	Molecular Weight (kDa) :	145.58 kDa
Application:	Kinetics (BLI), Kinetics (SPR), ELISA, Bioactivity: FACS, Functional assay	Endotoxin:	<1 EU/mg
Formulation:	Liquid: 100mM Pro-Ac, 20mM Arg pH 5.0   Lyophilization: 25mM histidine, 8% sucrose, 0.01% Tween80 pH6.2	Conjugation:	Unconjugated
Reconstitution:	For Powder, reconstitute with sterile, distilled water to a final concentration of 1 mg/ml. Gently shake to solubilize completely. Do not vortex.	Expression System:	CHO
Storage:	-80°C	Purification:	Protein A

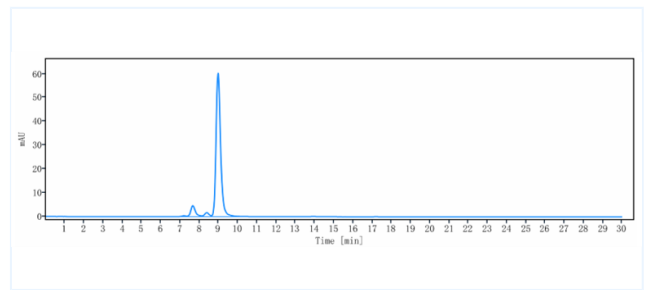
## Data

Purity: SDS-PAGE

Purity: SEC-HPLC

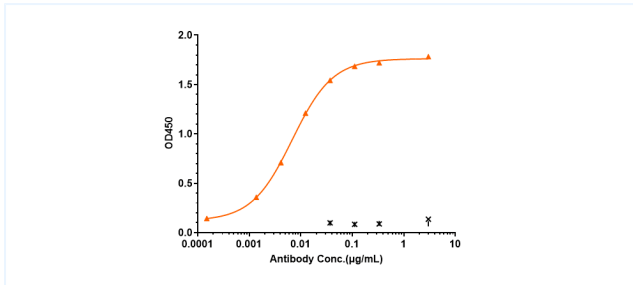


Anti-IL-2Ra / CD25 Reference Antibody (basiliximab) on SDS-PAGE under reducing (R) condition. The purity of the protein is greater than 90%.



The purity of Anti-IL-2Ra / CD25 Reference Antibody (basiliximab) is more than 95%, determined by SEC-HPLC.

## ELISA



Immobilized Human IL-2Ra / CD25, His Tag Protein at 2 ug/mL can bind Anti-IL-2Ra / CD25 Reference Antibody (basiliximab), EC50=0.006825 ug/mL.

The products are for research use only. Not for use in diagnostic procedures.