



CERTIFICATE OF ANALYSIS



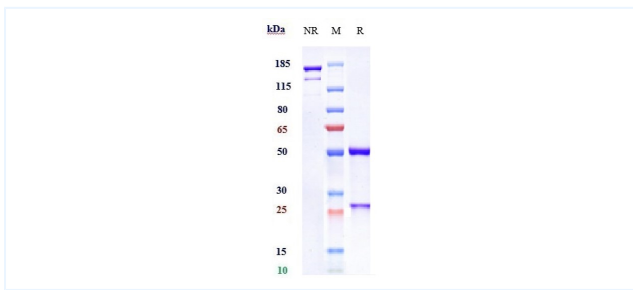
Product Details

Product name:	Anti-B7-H1 / PD-L1 / CD274 Reference Antibody (avelumab)	Lot.No.:	P226241
Target:	B7-H1 / PD-L1 / CD274	Catalog:	CHA081
Target Accession:	Q9NZQ7	Concentration :	1 mg/mL
Clonality:	Monoclonal	Isotype:	Human IgG1
Reactivity:	Human / Mouse / Cynomolgus	Molecular Weight (kDa) :	150 kDa
Application:	FCM, Block, In Vivo, ELISA	Endotoxin:	<1 EU/mg
Formulation:	Liquid: 100mM Pro-Ac, 20mM Arg pH 5.0 Lyophilization: 25mM histidine, 8% sucrose, 0.01% Tween80 pH6.2	Conjugation:	Unconjugated
Reconstitution:	For Powder, reconstitute with sterile, distilled water to a final concentration of 1 mg/ml. Gently shake to solubilize completely. Do not vortex.	Expression System:	CHO
Storage:	-80°C for 2 years under sterile conditions; -20°C for 1 year under sterile conditions; Avoid repeated freeze-thaw cycles.	Purification:	Protein A

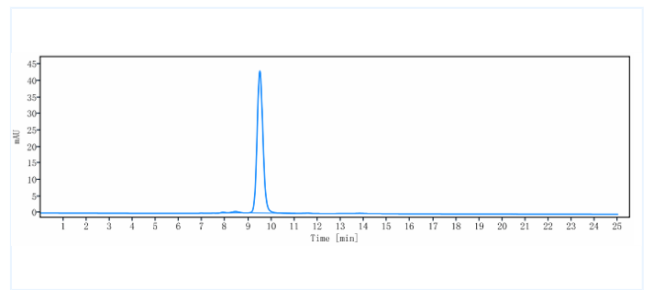
Data

Purity: SDS-PAGE

Purity: SEC-HPLC

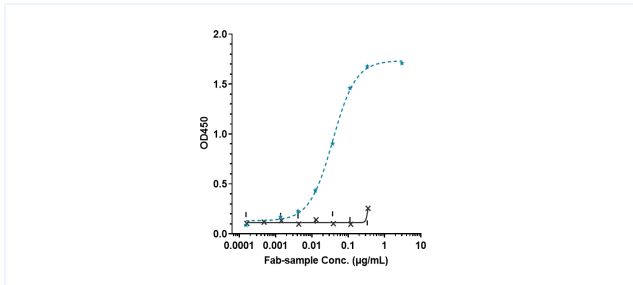


Anti- Human/Mouse/Monkey PD-L1 (Avelumab) on SDS-PAGE under reducing (R) condition. The purity of the protein is greater than 95%.



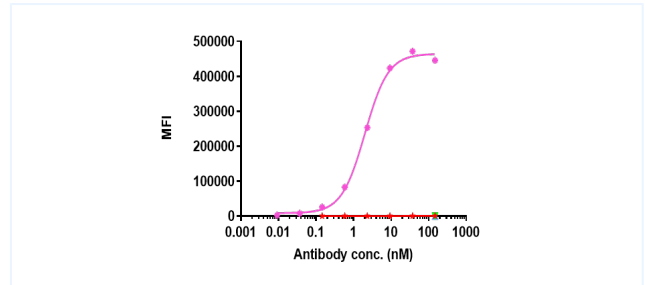
The purity of Anti- Human/Mouse/Monkey PD-L1 (Avelumab) is 98.22%, determined by SEC-HPLC.

Bioactivity: ELISA



Immobilized human PD-L1 (FC Tag, 2µg/mL) can bind to Anti-Human/Mouse/Monkey PD-L1 (Avelumab) with an EC50 of 0.03725 µg/mL.

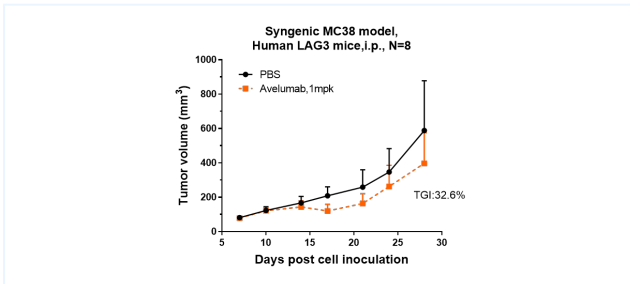
Bioactivity: FACS



Human PD-L1-expressing CHO-K cells were stained with Anti-Human/Mouse/Monkey PD-L1 (Avelumab), with isotype and secondary-only controls. Flow analysis showed specific binding of the antibody, with an EC50 of 2.02 nM.

The products are for research use only. Not for use in diagnostic procedures.

Research in vivo



Anti- Human/Mouse/Monkey PD-L1 (Avelumab) inhibited the tumor growth of MC38 on hLAG3 mice. The result showed significant anti-tumor effects, with an tumor inhibition rate (TGI) of 32.6% at 1 mpk at D28.

The products are for research use only. Not for use in diagnostic procedures.