



# CERTIFICATE OF ANALYSIS



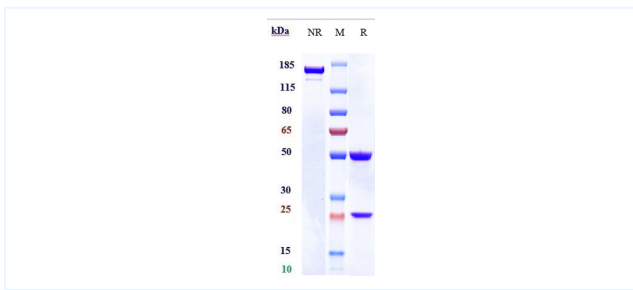
## Product Details

Product name:	Anti-CSF1 / M-CSF Reference Antibody (lacnotuzumab)	Lot.No.:	NA
Target:	CSF1 / M-CSF	Catalog:	CHA072
Target Accession:	P09603	Concentration :	1 mg/mL
Clonality:	Monoclonal	Isotype:	IgG1
Reactivity:	Human	Molecular Weight (kDa) :	150 kDa
Application:	Kinetics (BLI), Kinetics (SPR), ELISA, Bioactivity: FACS, Functional assay	Endotoxin:	<1 EU/mg
Formulation:	Liquid: 100mM Pro-Ac, 20mM Arg pH 5.0   Lyophilization: 25mM histidine, 8% sucrose, 0.01% Tween80 pH6.2	Conjugation:	None
Reconstitution:	For Powder, reconstitute with sterile, distilled water to a final concentration of 1 mg/ml. Gently shake to solubilize completely. Do not vortex.	Expression System:	CHO
Storage:	-80°C	Purification:	Protein A

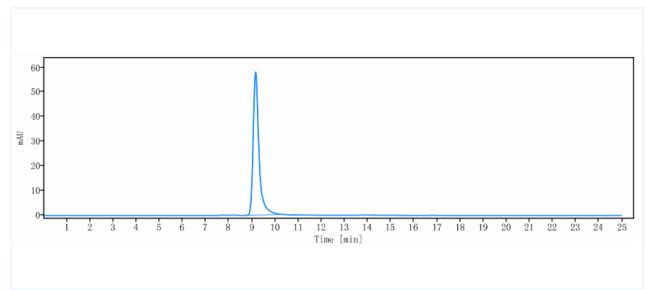
## Data

Purity: SDS-PAGE

Purity: SEC-HPLC



Anti-CSF1 / M-CSF Reference Antibody (lacnotuzumab) on SDS-PAGE under reducing (R) condition. The purity of the protein is greater than 90%.



The purity of Anti-CSF1 / M-CSF Reference Antibody (lacnotuzumab) is more than 95%, determined by SEC-HPLC.

The products are for research use only. Not for use in diagnostic procedures.