



# CERTIFICATE OF ANALYSIS

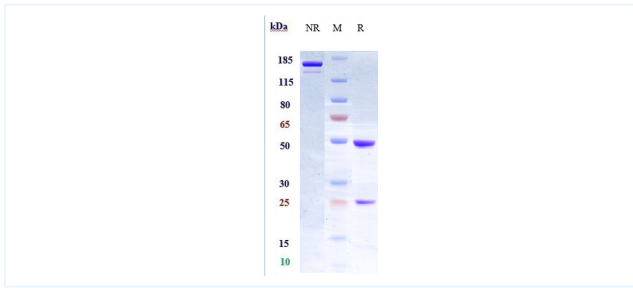


## Product Details

|                      |   |                             |              |
|----------------------|---|-----------------------------|--------------|
| Product name:        | Anti-LIF Reference Antibody (MSC-1)   | Lot.No.:                    | P94124       |
| Target:              | LIF   | Catalog:                    | CHA069       |
| Target<br>Accession: | P15018  | Concentration :             | 1 mg/mL      |
| Clonality:           | Monoclonal  | Isotype:                    | IgG1         |
| Reactivity:          | Human, Mouse, Cynomolgus  | Molecular Weight<br>(kDa) : | 146.6 kDa    |
| Application:         | Kinetics (SPR), ELISA, Bioactivity: FACS, Functional assay,<br>Research in vivo   | Endotoxin:                  | <1 EU/mg     |
| Formulation:         | Liquid: 100mM Pro-Ac, 20mM Arg pH 5.0 <br/><br>Lyophilization: 25mM histidine, 8% sucrose, 0.01% Tween80<br>pH6.2                                       | Conjugation:                | Unconjugated |
| Reconstitution:      | For Powder, reconstitute with sterile, distilled water to a<br>final concentration of 1 mg/ml. Gently shake to solubilize<br>completely. Do not vortex. | Expression System:          | CHO          |
| Storage:             | -80°C for 2 years under sterile conditions; -20°C for 1 year<br>under sterile conditions; Avoid repeated freeze-thaw cycles.                            | Purification:               | Protein A    |

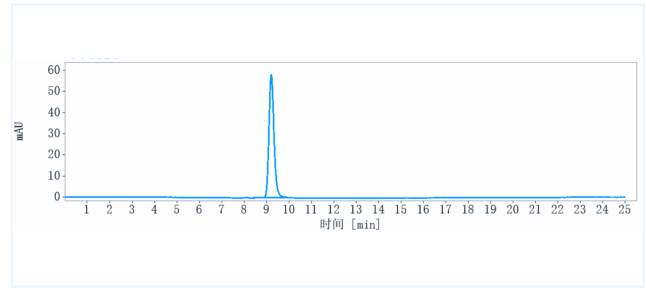
## Data

## Purity: SDS-PAGE



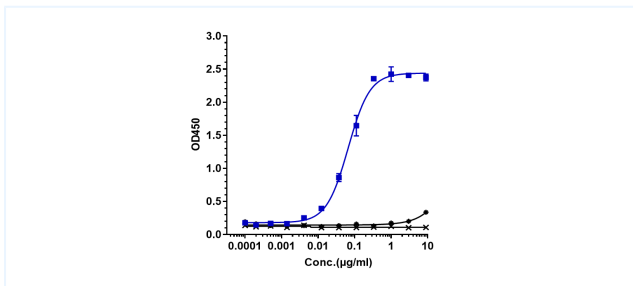
Anti-LIF Reference Antibody (MSC-1) on SDS-PAGE under reducing (R) condition. The purity of the protein is greater than 95%.

## Purity: SEC-HPLC



The purity of Anti-LIF Reference Antibody (MSC-1) is 98.6%, determined by SEC-HPLC.

## Bioactivity: ELISA



Immobilized human LIF His at 2 µg/mL can bind Anti-LIF Reference Antibody (MSC-1), EC50=0.06665 µg/mL.

The products are for research use only. Not for use in diagnostic procedures.