



CERTIFICATE OF ANALYSIS

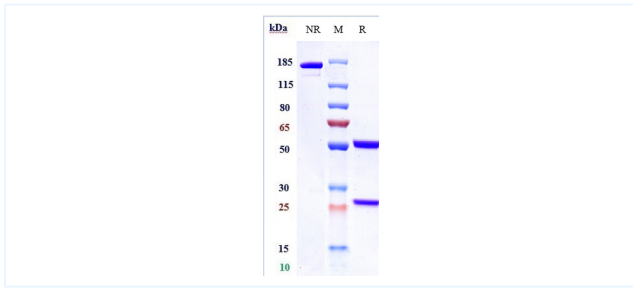


Product Details

Product name:	Anti-GPC3 / Glypican-3 Reference Antibody (codrituzumab)	Lot.No.:	P227791
Target:	GPC3 / Glypican-3	Catalog:	CHA050
Target Accession:	P51654	Concentration :	1 mg/mL
Clonality:	Monoclonal	Isotype:	IgG1
Reactivity:	Human	Molecular Weight (kDa) :	145.5 kDa
Application:	Kinetics (SPR), ELISA, Bioactivity: FACS, Functional assay, Research in vivo	Endotoxin:	<1 EU/mg
Formulation:	Liquid: 100mM Pro-Ac, 20mM Arg pH 5.0 Lyophilization: 25mM histidine, 8% sucrose, 0.01% Tween80 pH6.2	Conjugation:	Unconjugated
Reconstitution:	For Powder, reconstitute with sterile, distilled water to a final concentration of 1 mg/ml. Gently shake to solubilize completely. Do not vortex.	Expression System:	CHO
Storage:	-80°C for 2 years under sterile conditions; -20°C for 1 year under sterile conditions; Avoid repeated freeze-thaw cycles.	Purification:	Protein A

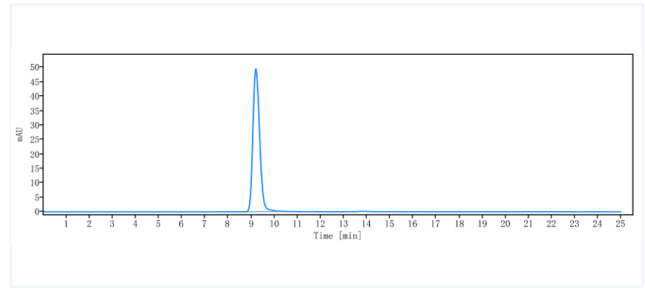
Data

Purity: SDS-PAGE



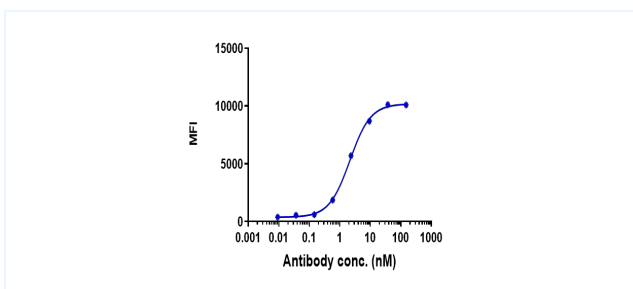
Anti-GPC3 / Glypican-3 Reference Antibody (codrituzumab) on SDS-PAGE under reducing (R) condition. The purity of the protein is greater than 95%.

Purity: SEC-HPLC



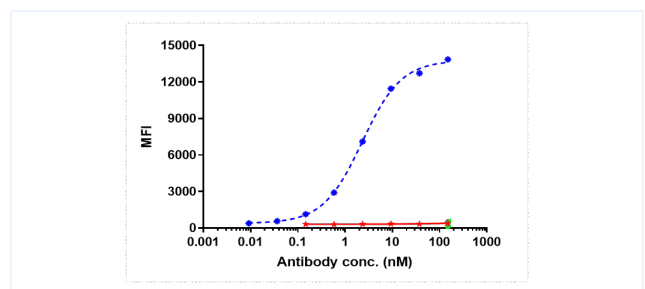
The purity of Anti-GPC3 / Glypican-3 Reference Antibody (codrituzumab) is more than 95%, determined by SEC-HPLC.

Bioactivity: FACS



Human GPC3 CHOS cells were stained with Anti-GPC3 / Glypican-3 Reference Antibody (codrituzumab) and negative control protein respectively, washed and then followed by PE and analyzed with FACS, EC50=2.142 nM.

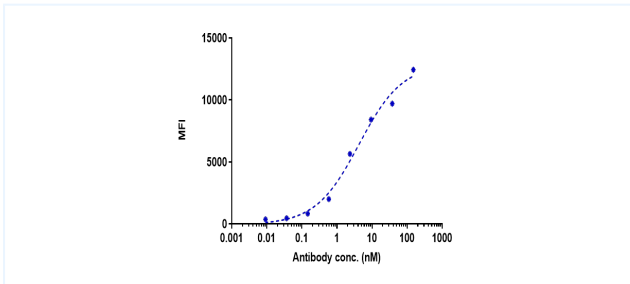
Bioactivity: FACS



HEP3B cells were stained with anti-GPC3 / Glypican-3 Reference Antibody (codrituzumab) and negative control protein respectively, washed and then followed by PE and analyzed with FACS.

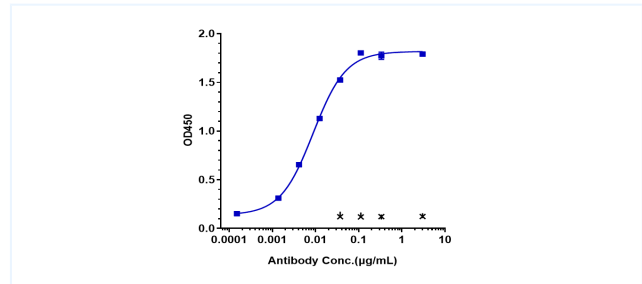
The products are for research use only. Not for use in diagnostic procedures.

Bioactivity: FACS



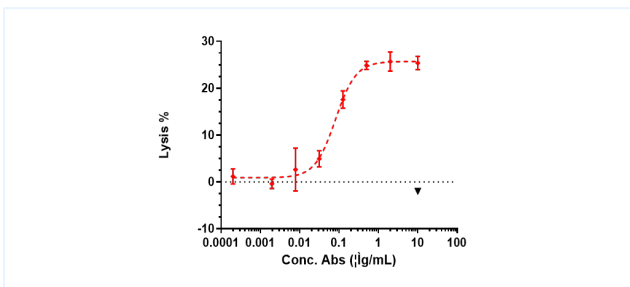
HEPG2 cells were stained with anti-GPC3 / Glypican-3 Reference Antibody (codrituzumab) and negative control protein respectively, washed and then followed by PE and analyzed with FACS.

Bioactivity: ELISA



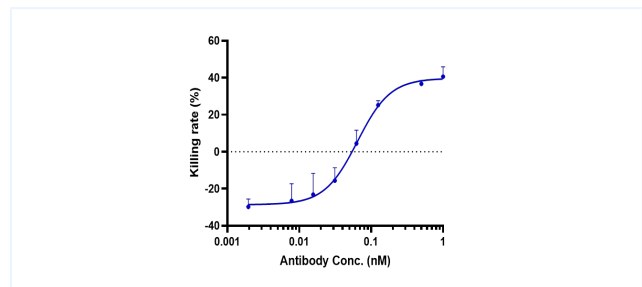
Immobilized human GPC3, His Tag at 2 µg/mL can bind Anti-GPC3 / Glypican-3 Reference Antibody (codrituzumab), EC50=0.008741 µg/mL.

Function: ADCC



Anti-GPC3 / Glypican-3 Reference Antibody (Codrituzumab) induced ADCC activity was evaluated using human GPC3 CHOS Cell. The max Lysis rate was approximately 30%.

Function: Internalization



The endocytosis ratio codrituzumab by HuH-7 increased with the increase of antibody concentration, and the Internalization Rate (%) reached 40% at antibody concentration of 1 nM.

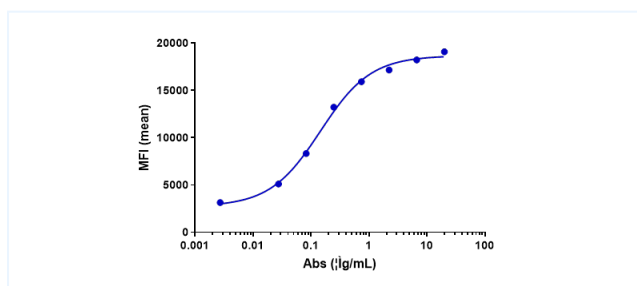
The products are for research use only. Not for use in diagnostic procedures.



CERTIFICATE OF ANALYSIS



Bioactivity: FACS



Huh-7 cells were stained with anti-GPC3 / Glypican-3 Reference Antibody (codrituzumab) and negative control protein respectively, washed and then followed by PE and analyzed with FACS

The products are for research use only. Not for use in diagnostic procedures.