



CERTIFICATE OF ANALYSIS

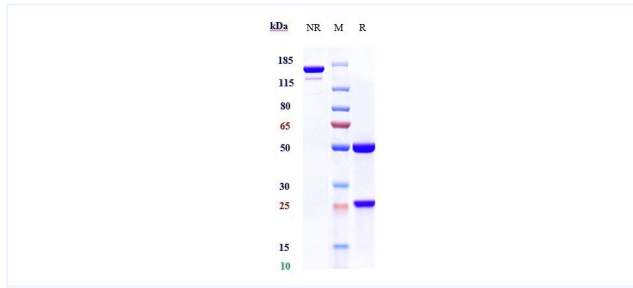


Product Details

Product name:	Anti-AXL / UFO Reference Antibody (tilvestamab)	Lot.No.:	P221715
Target:	AXL / UFO	Catalog:	CHA610
Target Accession:	P30530	Concentration :	1 mg/mL
Clonality:	Monoclonal	Isotype:	IgG1
Reactivity:	Human	Molecular Weight (kDa) :	146.22 kDa
Application:	Kinetics (SPR), ELISA, Bioactivity: FACS, Functional assay, Research in vivo	Endotoxin:	<1 EU/mg
Formulation:	Liquid: 100mM Pro-Ac, 20mM Arg pH 5.0 Lyophilization: 25mM histidine, 8% sucrose, 0.01% Tween80 pH6.2	Conjugation:	Unconjugated
Reconstitution:	For Powder, reconstitute with sterile, distilled water to a final concentration of 1 mg/ml. Gently shake to solubilize completely. Do not vortex.	Expression System:	CHO
Storage:	-80°C for 2 years under sterile conditions; -20°C for 1 year under sterile conditions; Avoid repeated freeze-thaw cycles.	Purification:	Protein A

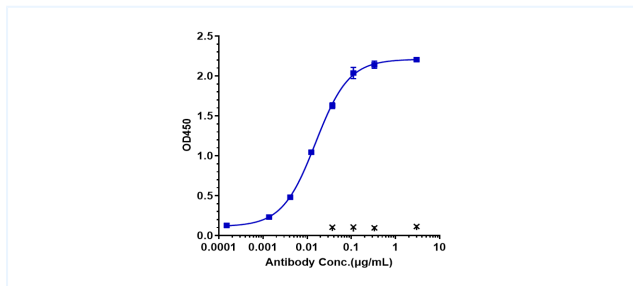
Data

Purity: SDS-PAGE



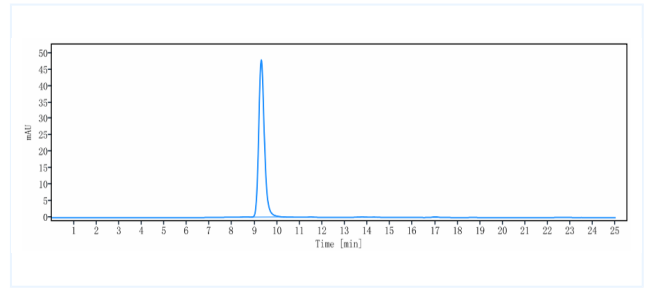
Anti-AXL / UFO Reference Antibody (tilvestamab) on SDS-PAGE under reducing (R) condition. The purity of the protein is greater than 95%.

Bioactivity: ELISA



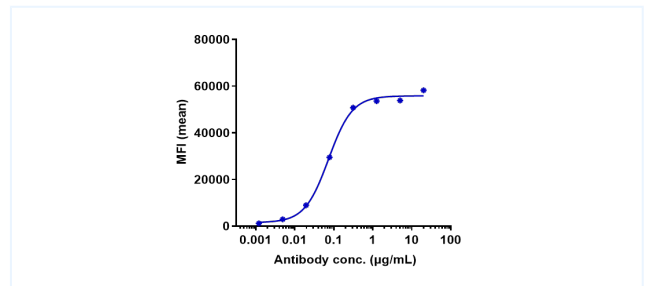
Immobilized human Axl FC at 2 µg/mL can bind Anti-AXL / UFO Reference Antibody (tilvestamab), EC50=0.01542 µg/mL.

Purity: SEC-HPLC



The purity of Anti-AXL / UFO Reference Antibody (tilvestamab) is more than 95%, determined by SEC-HPLC.

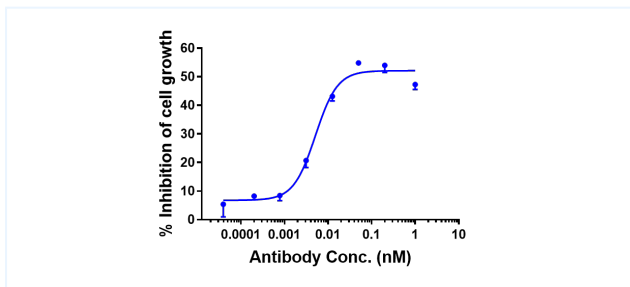
Bioactivity: FACS



Human AXL HEK293 cells were stained with Anti-AXL / UFO Reference Antibody (tilvestamab) and negative control protein respectively, washed and then followed by PE and analyzed with FACS, EC50=0.07318 µg/mL.

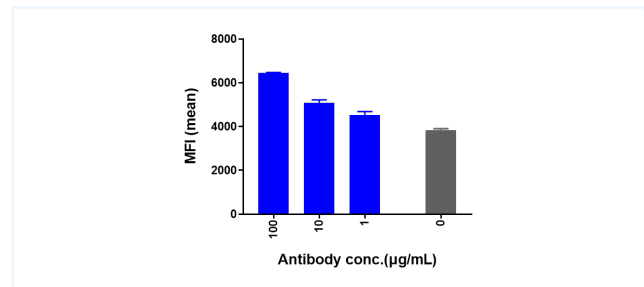
The products are for research use only. Not for use in diagnostic procedures.

Function: Internalization



The endocytosis ratio tilvestamab by U251 increased with the increase of antibody concentration, and the Internalization Rate (%) reached 40% at antibody concentration of 1 nM.

Function: Phosphorylation



Anti-AXL / UFO Reference Antibody (tilvestamab) P-AKT Test was evaluated using U251 cell. The max induction fold was approximately 1.43.

The products are for research use only. Not for use in diagnostic procedures.